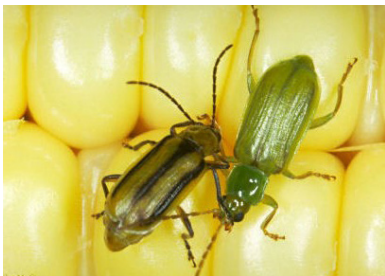


CORN ROOTWORM BEST MANAGEMENT PRACTICES

Break the Cycle

Removing the Corn Rootworm (CRW) Bt trait from the field for a season can help break the cycle of resistance development

- Rotate to soybeans or another non-host crop
- Avoid three or more years of continuous CRW Bt trait use
- If low CRW populations are anticipated, consider planting a non-CRW Bt product along with a soil applied insecticide or Corteva's enhanced CRW seed treatment containing Lumisure® 1250 and Lumialza™ nematocide seed treatment for additional protection.



Manage Populations

Know your CRW populations so you can reduce the risk of significant root injury the following season



- Utilize sticky traps to scout your fields for weekly presence of adult CRW beetles from silking through grain fill
- Use action thresholds to determine whether to apply a foliar insecticide to reduce CRW populations
- Check for root injury to determine the effectiveness of your current management plan

Protect Yield Potential

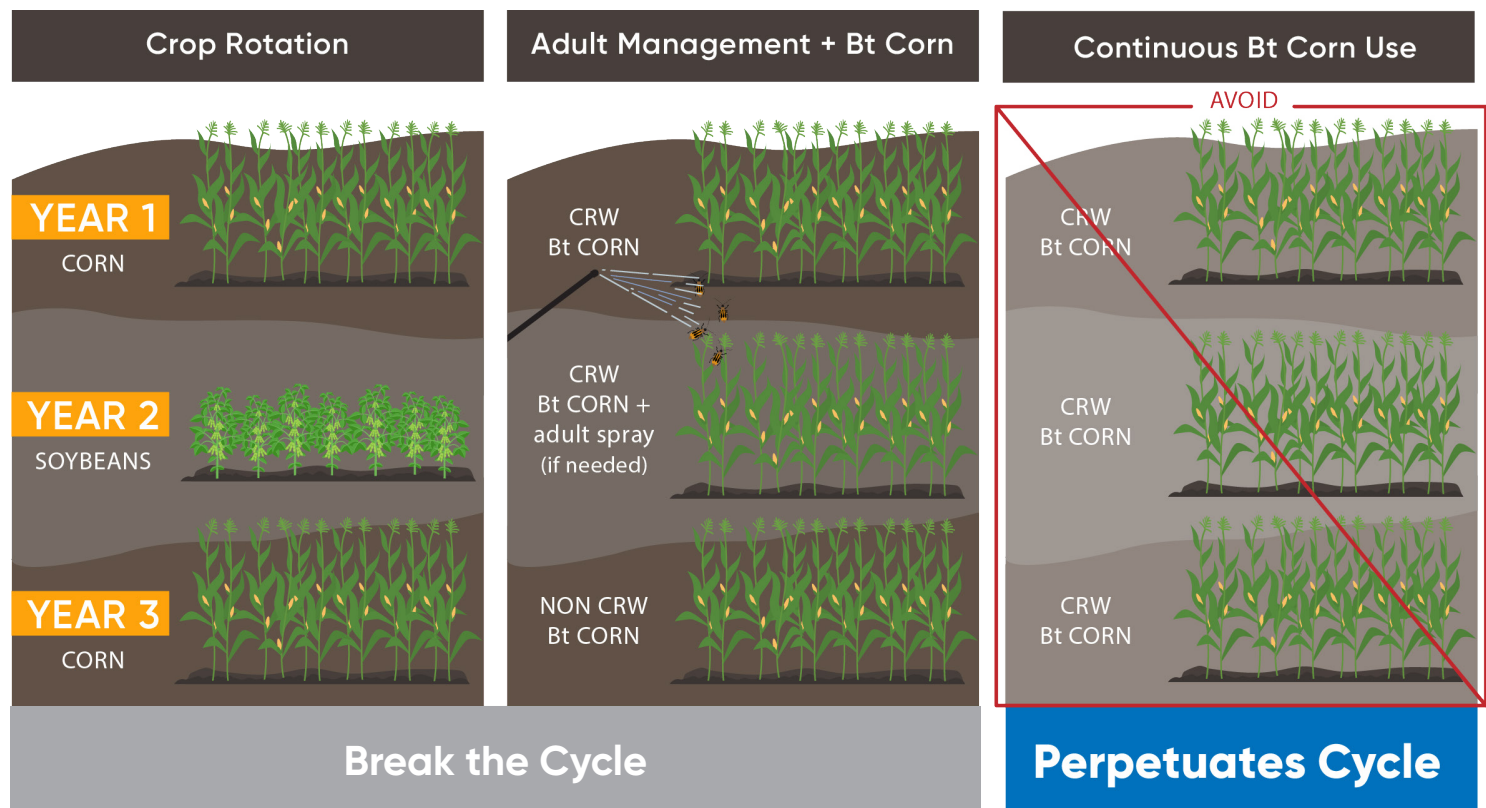
If high CRW populations are anticipated for the upcoming season, utilize multiple modes of action for control

- Plant a product with multiple modes of action of control against CRW, such as Corteva Qrome® products
- Consider using a CRW Bt-traited product with Corteva's enhanced CRW seed treatment containing Lumisure 1250 and Lumialza bio-nematicide for additional protection.
- Application of a soil-applied insecticide in addition to using a CRW Bt-traited product is not recommended for control of CRW except in limited circumstances. Consult with your Corteva agronomist, extension service, crop consultant, or other local experts for further guidance.

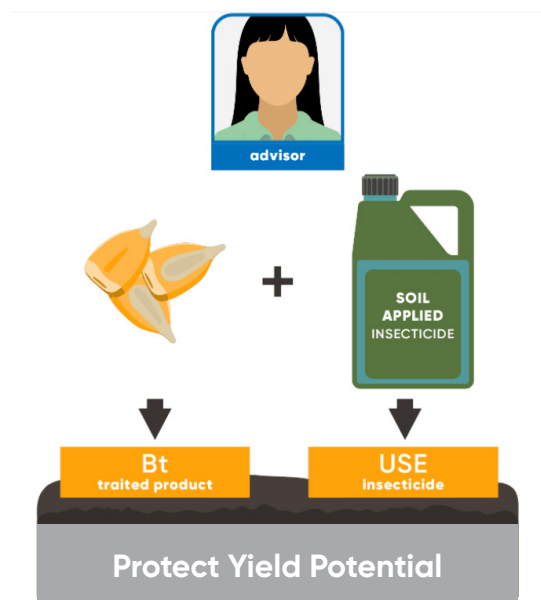


CRW MANAGEMENT BMPS – TWO STRATEGIC APPROACHES

Multi-year proactive approach



Single year reactive approach



Strive for a multi-year proactive approach that focuses on breaking the CRW cycle by either crop rotation, or adult management + Bt corn. If you take the single year approach where you only focus on protecting yield potential, you might be effective, but populations will continue to build, and resistance will continue to evolve.



NuTechSeed.com
1-888-647-3478



Refer to a sales professional for the latest and complete listing of traits and scores for each product. QROME® products are approved for cultivation in the U.S. and Canada. They have also received approval in a number of importing countries, most recently China. For additional information about the status of regulatory authorizations, visit <http://www.biotradestatus.com/>

Components of LumiGEN® seed treatments are applied at a Corteva Agriscience production facility, or by an independent sales representative of Corteva Agriscience or its affiliates. Not all sales representatives offer treatment services, and costs and other charges may vary. See your sales representative for details. Seed applied technologies exclusive to Corteva Agriscience and its affiliates.

Agrisure® is a registered trademark of, and used under license from, a Syngenta Group Company. Agrisure® technology incorporated into these seeds is commercialized under a license from Syngenta Crop Protection AG. Roundup Ready® is a registered trademark used under license from Monsanto Company. Liberty®, LibertyLink® and the Water Droplet Design are trademarks of BASF. Always follow IRM, grain marketing and all other stewardship practices and pesticide label directions. B.t. products may not yet be registered in all states. Check with your seed representative for the registration status in your state. Always read and follow label directions. Corteva brand products are provided subject to the terms and conditions of purchase which are part of the labeling and purchase documents. TM & SM. Trademarks and service marks of Corteva Agriscience and its affiliated companies. © 2021 Corteva.